

BBP72 Double-Sided Printer

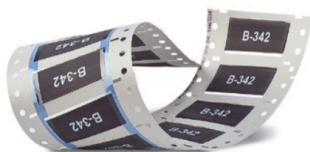


BBP72 Double-Sided Printer



www.bradyeurope.com/wire-automation

Print accurate, double-sided heat shrink sleeves for wire and cable in half the time.



Together with Brady ribbon, the heat shrink sleeves for the BBP72 printer meet the following specifications:

- SAE- DTL- 23053/5 Class 1
- SAE- M-81531
- MIL-STD-202
- UL Recognized
- CSA Accepted

The BBP72 Double-Sided Sleeve Printer is the ultimate sleeving solution for printing two-sided heat shrink sleeves. Designed to print on both the top and the bottom of the sleeve simultaneously, the BBP72 Double-Sided Sleeve Printer creates sleeves in a seamless one-pass operation.

The BBP72 Double-Sided Sleeve Printer allows you to print on both sides of the heat shrink tubing without the time-consuming, tedious process of re-winding and re-printing the sleeves. Save time, minimize waste and reduce sleeving errors with the BBP72 printer.

Efficient heat shrink tubing printer with superior print quality

- Time-saving double-sided printing with one-pass operation
- Automatic printing and formatting for reducing label errors
- Less sleeve waste due to incorrect set-up and misalignment
- Crisp, clear thermal transfer printing with 300 dpi print resolution

High-performance heat shrink sleeves that meet many specifications

- Variety of heat shrink sleeves including PermaSleeve™ and Heatex™ materials to fit multiple applications
- Durable, fade-resistant and smudge-proof sleeves – even in the harshest environments

Brady offers a full line of high-performance heat shrink sleeve products that can be used with the BBP72 Double-Sided Sleeve Printer. Coupled with the easy-to-use LabelMark™ or Brady Workstation software the BBP72 printer is an ideal double-sided labeling solution for wire and cable identification.



Article No.	Description
361110	BBP72 Double-sided Sleeve Printer

BBP72 Double-Sided Printer

Printer Specifications

Printhead	
Print Technology	Thermal Transfer
Print Resolution (dpi)	300 dpi
Print Speed (mm/sec)	125 mm/sec
Maximum Print Width (mm)	105.60 mm
Material	
Continuous rolls or fan-folded	Double sided heat shrinkable sleeves
Material thickness mm	0.055 - 1.2
weight g/m²	60 - 300
Label Dimension Limits*	Max. Width: 106.00 mm Min. Width: 4.00 mm Max. Height: 1000 mm Min. Height: 5.00 mm
Limits for continuous material and flat pressed tubes* from 0.4 thick mm	Max. Width: 110 mm Min. Width: 3.5 mm
Limits for carrier material	Max. Width: 110 mm Min. Width: 25 mm
Media roll	Total diameter: up to 300 mm Core diameter: 38 - 100 mm Winding direction: preferred inside*
Dimensions of the printer	
Height x Width x Depth	395.00 mm x 248.00 mm x 554.00 mm
Weight	21
Operation data	
Power Supply	100 - 240 V ~ 50/60 Hz, PFC
Power consumption	Max. 300 W
Operating Temperature	10°C-35°C
Operating Humidity	30-85% (non-condensing)
Approval/Compliance	CE, FCC class A, CB, CCC, UL

*Critical materials or applications need to be tested and released.

Monitoring	
Stop printing if	End of ribbon End of labels Printhead open
On the display	Data reception WLAN field intensity Ethernet state Used memory Temperature printhead Access to memory card Remaining quantity of ribbon Clock Date sheet Abc debug Input buffer
Fonts	
Font Types	5 Bitmap fonts incl. OCR-A, OCR-B and 3 Vector Swiss 721, Swiss 721 Bold and Monospace 821 available internally, loadable TrueType Fonts. Optional Chinese (simplified Chinese) Optional Thai
Character Sets	Windows 1250 up to 1257, DOS 437, 737, 775, 850, 852, 857, 862, 864, 866, 869, EBCDIC 500, ISO 8859-1 up to -10 and -13 up to -16, WinOEM 720, UTF-8, Macintosh Roman, DEC MCS, KOI8-R. All West and East European latin, cyrillic, greek, hebrew and arabic characters are supported. Optional Thai and Chinese.
Bitmap fonts	Size of width and height 1-3mm Zoom 2-10. Orientation 0°, 90°, 180°, 270°
Vector-/True Type fonts	Size of width and height 0.9 - 128 mm variable zoom Orientation 360° in steps of 1°
Font formats	Bold, italic, underlined, outline, negative, grey, vertical, depending on character fonts
Font width	Variable

Get a Full solution



Automated print & apply



Specialised high quality identification



Software



Support & services

www.bradyeurope.com/wire-automation



Brady EMEA Locations

Africa	+27 11 704 3295	Middle East	+971 4881 2524
Benelux	+32 (0) 52 45 78 11	Norway	+47 70 13 40 00
Central & Eastern Europe	+421 2 3300 4800	Romania	+40 21 202 3032
Denmark	+45 66 14 44 00	Russia	+7 495 269 47 87
France	+33 (0) 3 20 76 94 48	Spain & Portugal	+34 900 902 993
Germany	+49 (0) 6103 7598 660	Sweden	+46 (0) 8 590 057 30
Hungary	+36 23 500 275	Turkey	+90 212 264 02 20
Italy	+39 02 26 00 00 22	UK & Ireland	+44 (0) 1295 228 288

© 2017 Brady Worldwide Inc. All rights reserved.

Your Brady Distributor

www.bradyeurope.com

21/04/2017

EUR-G-604-EN